

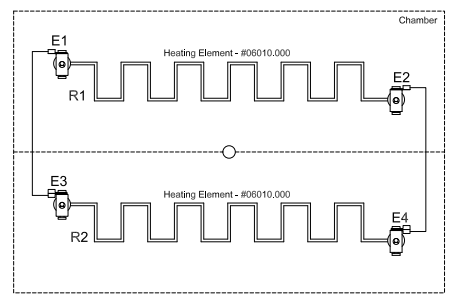
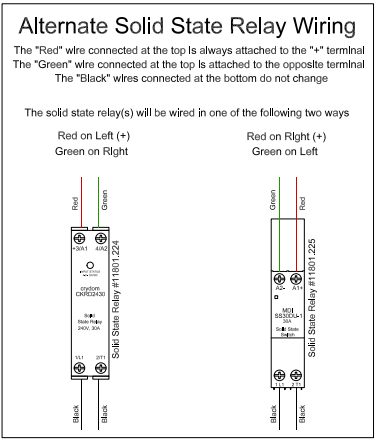
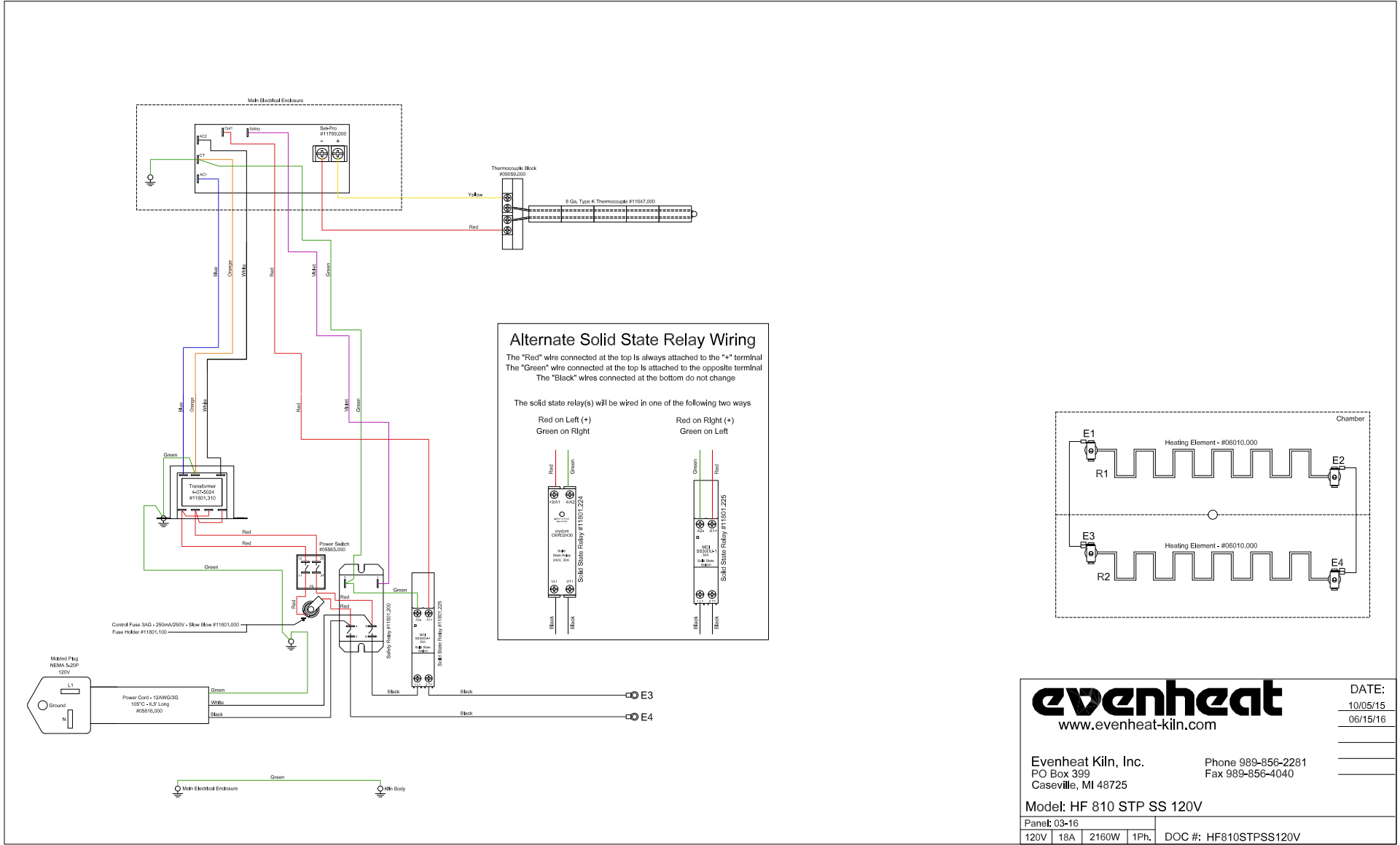
**evenheat**  
www.evenheat-kiln.com

DATE:  
10/05/15  
06/15/16

Evenheat Kiln, Inc. Phone 989-856-2281  
PO Box 399 Fax 989-856-4040  
Caseville, MI 48725

Model: HF 810 STP 120V

Panel: 03-16	
120V	18A 2160W 1Ph. DOC #: HF810STP120V



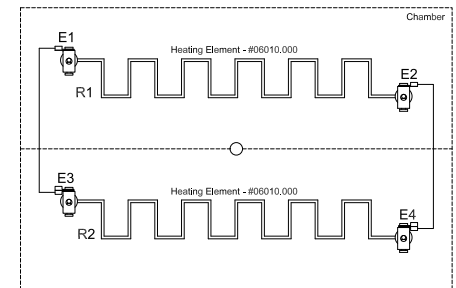
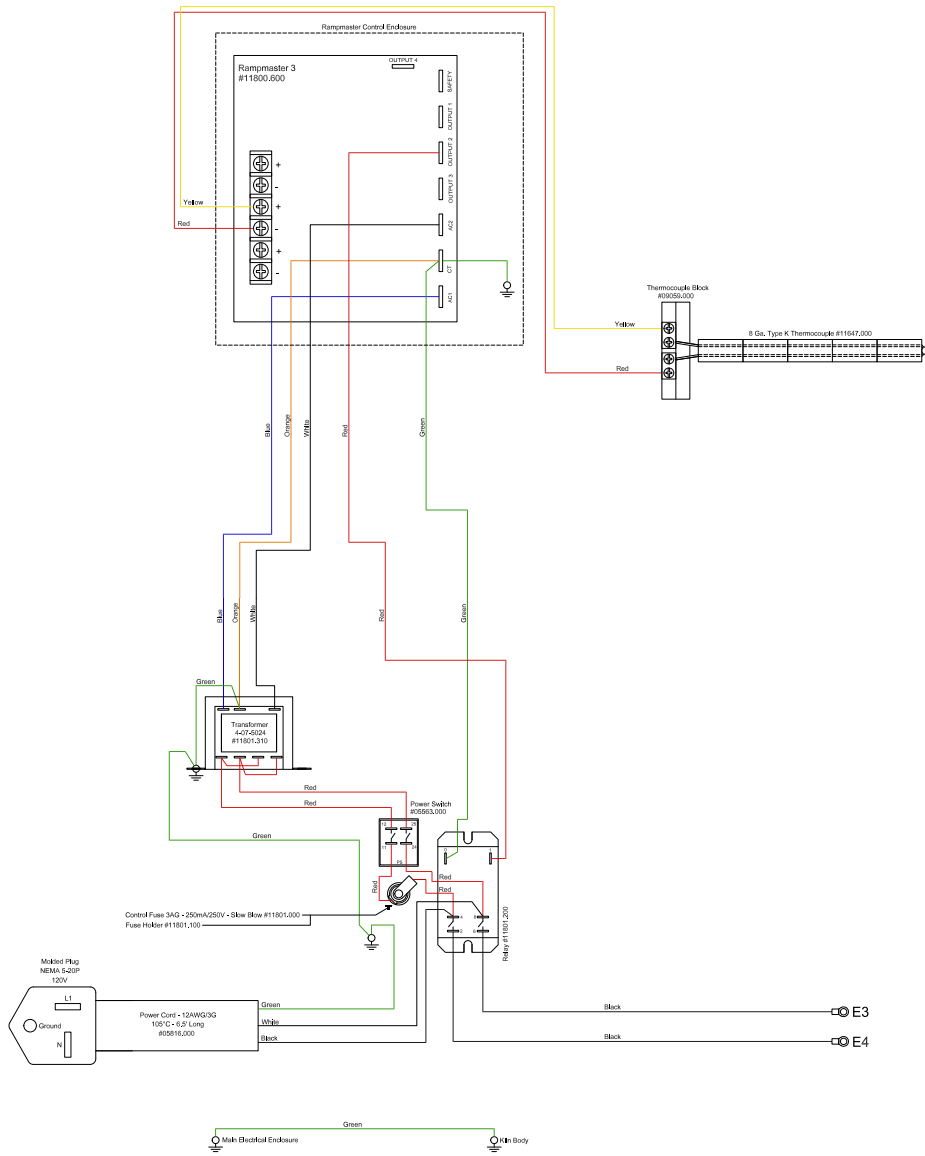
www.evenheat-kiln.com

DATE:  
10/05/15  
06/15/16

Evenheat Kiln, Inc. Phone 989-856-2281  
 PO Box 399 Fax 989-856-4040  
 Caseville, MI 48725

Model: HF 810 STP SS 120V

Panel: 03-16				DOC #: HF810STPSS120V	
120V	18A	2160W	1Ph.		



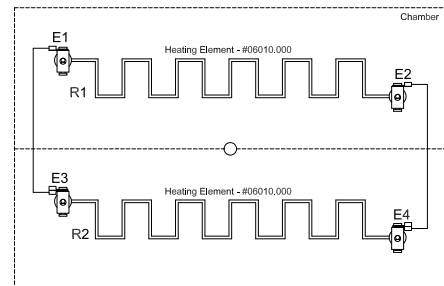
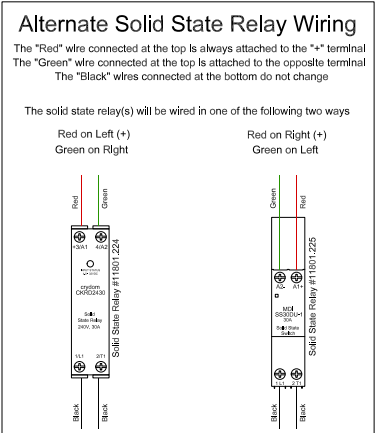
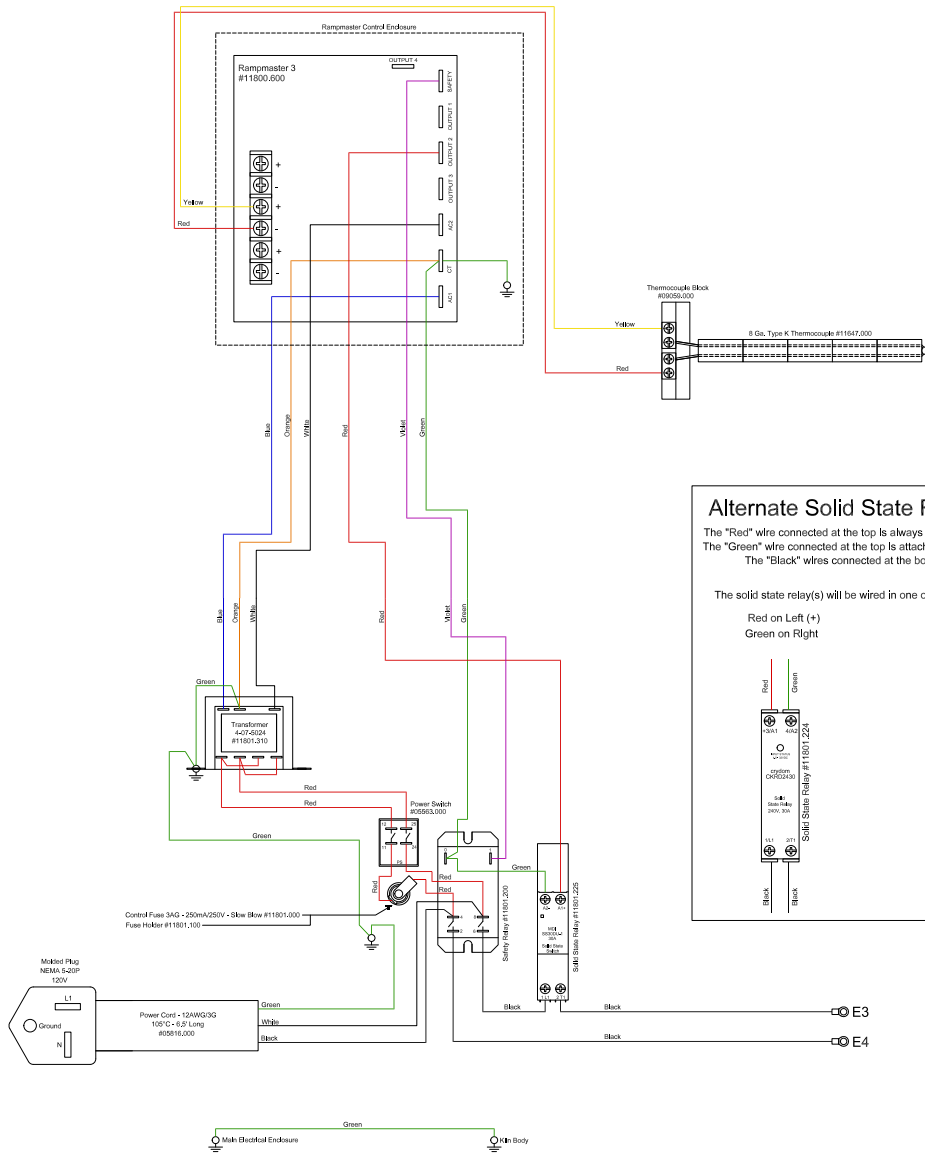
**evenheat**  
www.evenheat-kiln.com

DATE:  
10/05/15  
06/15/16

Evenheat Kiln, Inc. Phone 989-856-2281  
PO Box 399 Caseville, MI 48725 Fax 989-856-4040

Model: HF 810 RM II 120V

Panel: 03-16				
120V	18A	2160W	1Ph.	DOC #: HF810RMII120V



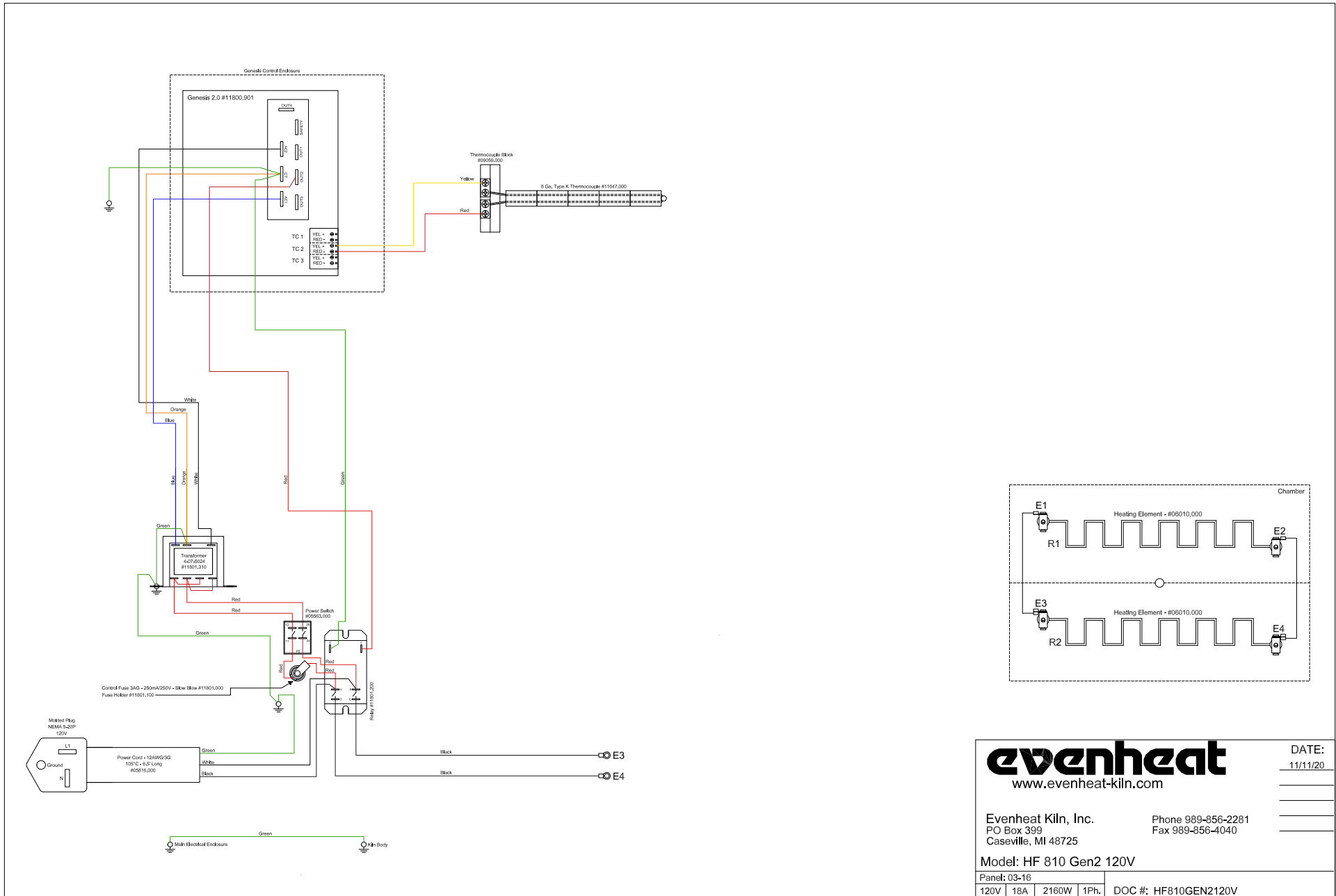
**evenheat**  
 www.evenheat-kiln.com

DATE:  
 10/05/15  
 06/15/16

Evenheat Kiln, Inc. Phone 989-856-2281  
 PO Box 399 Fax 989-856-4040  
 Caseville, MI 48725

Model: HF 810 RM II SS 120V

Panel: 03-16	
120V	18A   2160W   1Ph.   DOC #: HF810RMISS120V



**evenheat**  
www.evenheat-kiln.com

DATE: 11/11/20

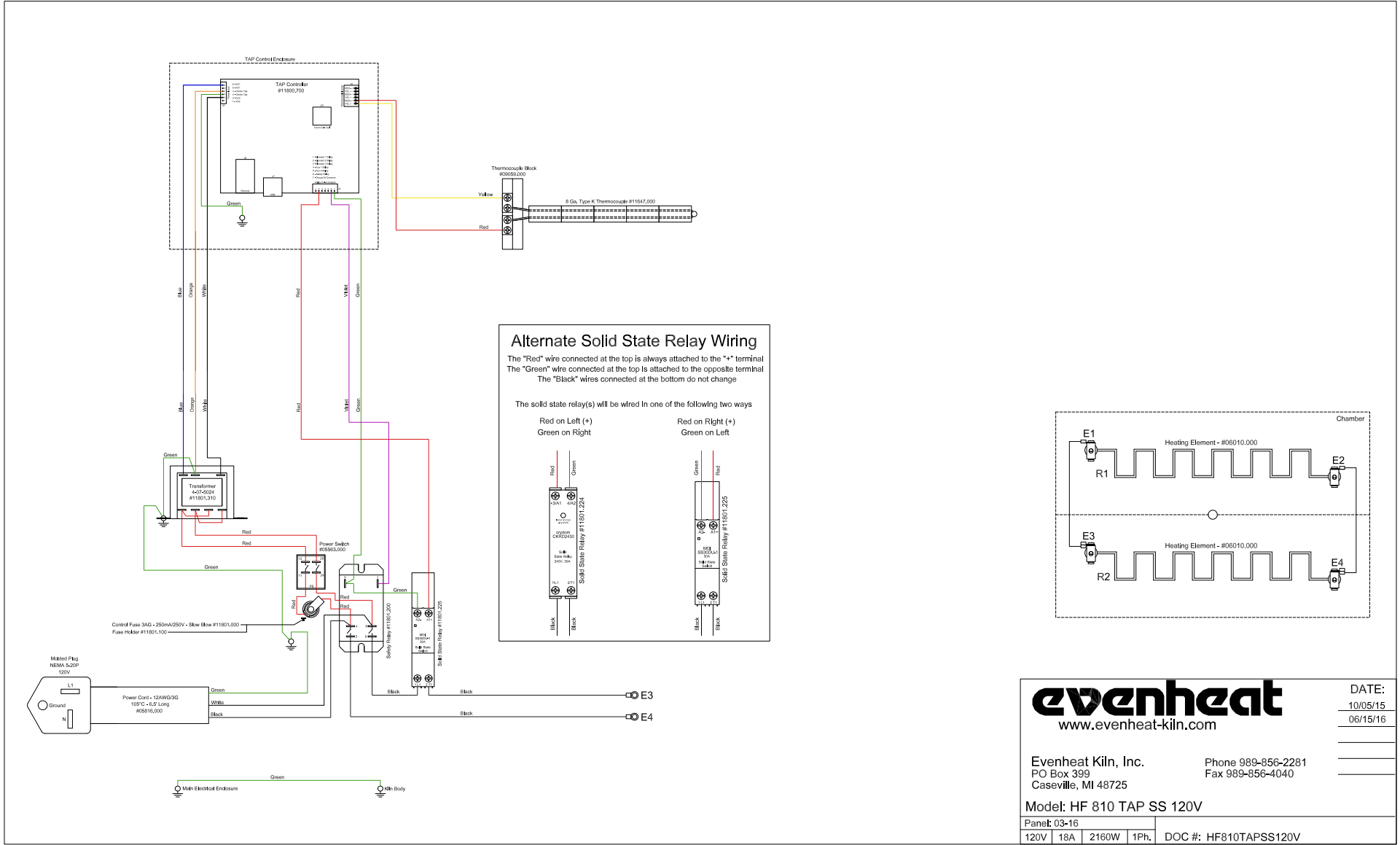
Evenheat Kiln, Inc. Phone 989-856-2281  
PO Box 399 Fax 989-856-4040  
Caseville, MI 48725

Model: HF 810 Gen2 120V

Panel: 03-16	
120V	18A 2160W 1Ph. DOC #: HF810GEN2120V







### Alternate Solid State Relay Wiring

The "Red" wire connected at the top is always attached to the "+" terminal  
 The "Green" wire connected at the top is attached to the opposite terminal  
 The "Black" wires connected at the bottom do not change

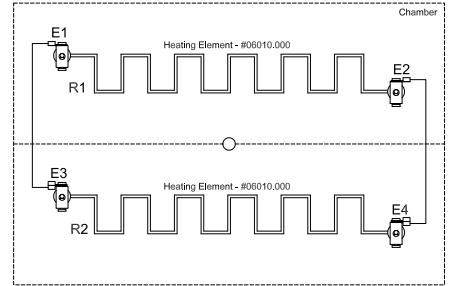
The solid state relay(s) will be wired in one of the following two ways

Red on Left (+)  
Green on Right

Solid State Relay #11801225

Red on Right (+)  
Green on Left

Solid State Relay #11801225



www.evenheat-kiln.com

DATE:  
10/05/15  
06/15/16

Evenheat Kiln, Inc. Phone 989-856-2281  
 PO Box 399 Fax 989-856-4040  
 Caseville, MI 48725

Model: HF 810 TAP SS 120V

Panel: 03-16					
120V	18A	2160W	1Ph.	DOC #: HF810TAPSS120V	