

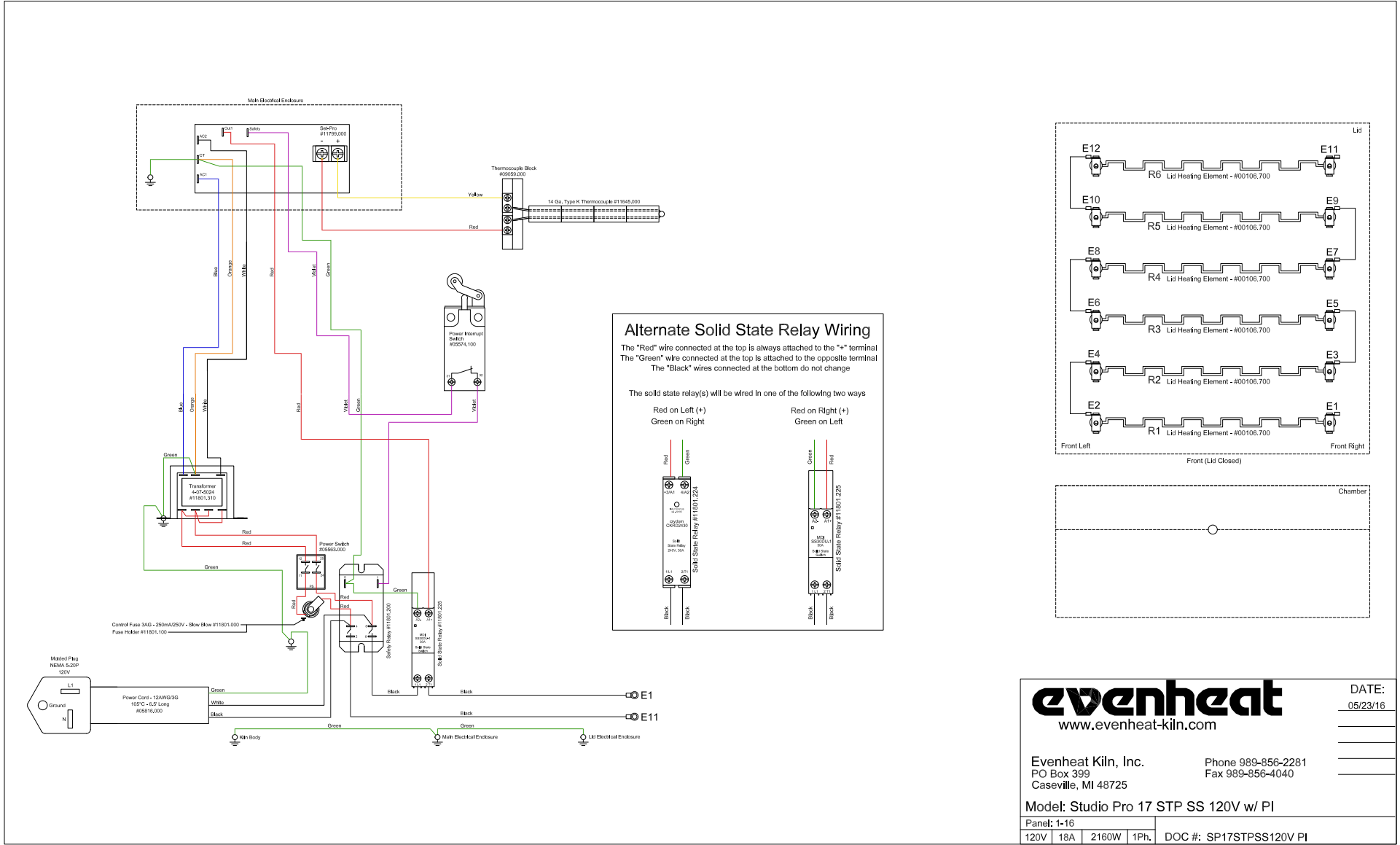
evenheat
www.evenheat-kiln.com

DATE: 05/23/16

Evenheat Kiln, Inc. Phone 989-856-2281
PO Box 399 Fax 989-856-4040
Caseville, MI 48725

Model: Studio Pro 17 STP 120V w/ PI

Panel: 1-16					
120V	18A	2160W	1Ph.	DOC #: SP17STP120V PI	

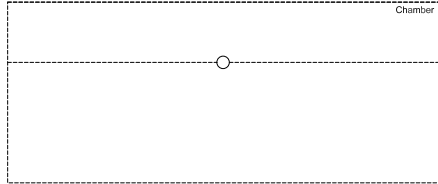
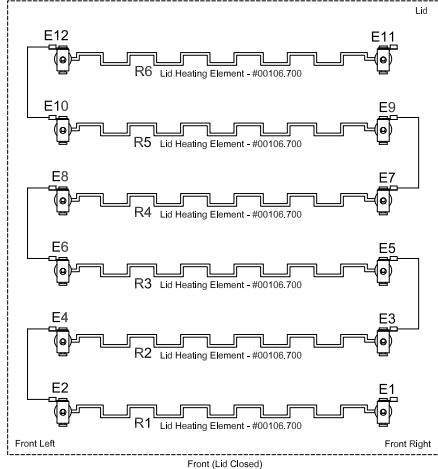


Alternate Solid State Relay Wiring

The "Red" wire connected at the top is always attached to the "+" terminal
 The "Green" wire connected at the top is attached to the opposite terminal
 The "Black" wires connected at the bottom do not change

The solid state relay(s) will be wired in one of the following two ways

Red on Left (+) Red on Right (+)
 Green on Right Green on Left

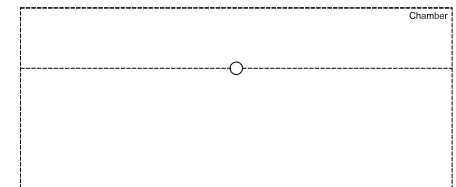
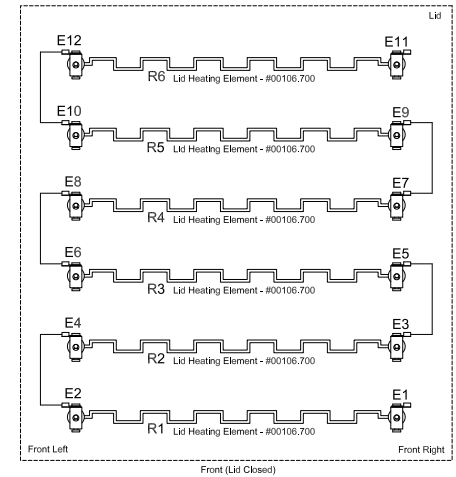
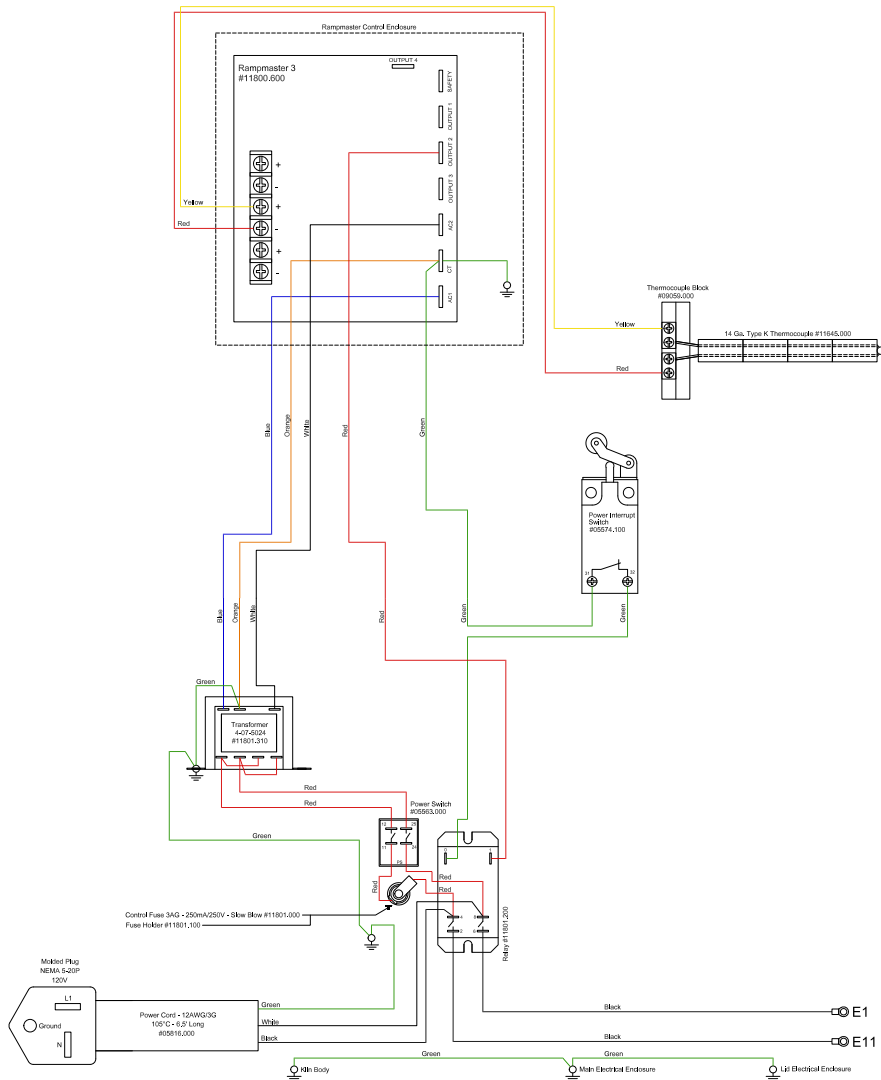


evenheat DATE: 05/23/16
 www.evenheat-kiln.com

Evenheat Kiln, Inc. Phone 989-856-2281
 PO Box 399 Fax 989-856-4040
 Caseville, MI 48725

Model: Studio Pro 17 STP SS 120V w/ PI

Panel: 1-16			
120V	18A	2160W	1Ph.
DOC #:			SP17STPSS120V PI



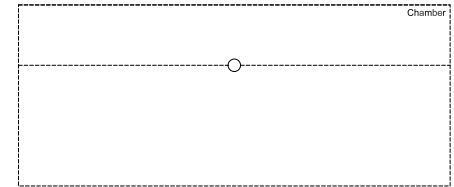
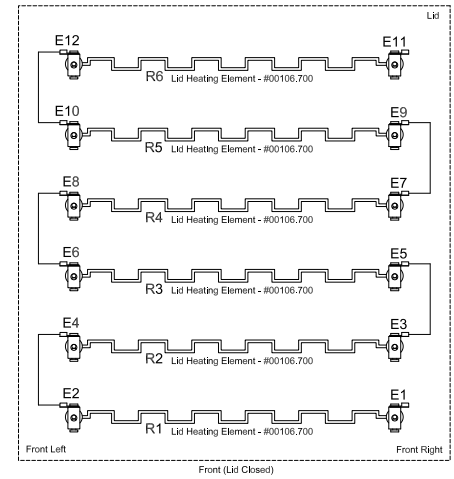
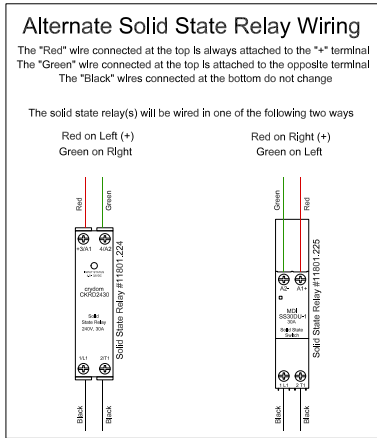
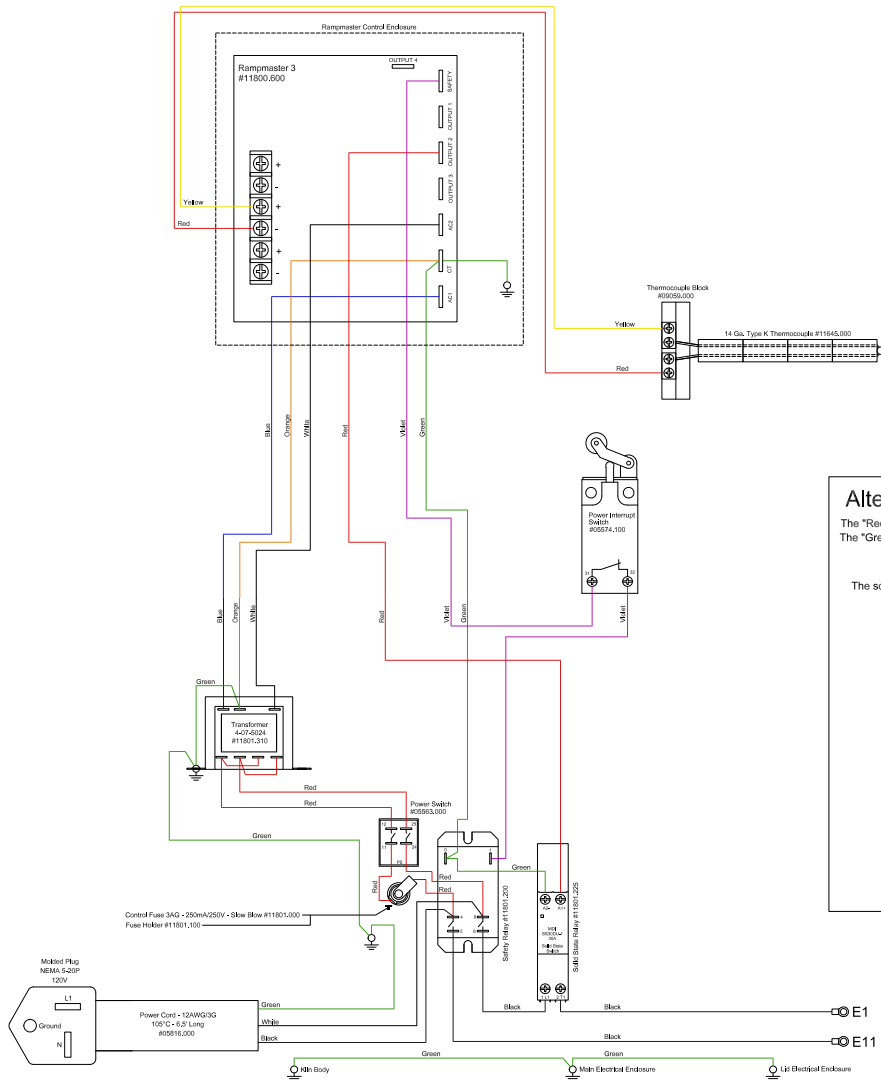
evenheat
www.evenheat-kiln.com

DATE:
05/23/16

Evenheat Kiln, Inc. Phone 989-856-2281
PO Box 399 Fax 989-856-4040
Caseville, MI 48725

Model: Studio Pro 17 RM3 120V w/ PI

Panel: 1-16	
120V	18A 2160W 1Ph. DOC #: SP17RM3120V PI



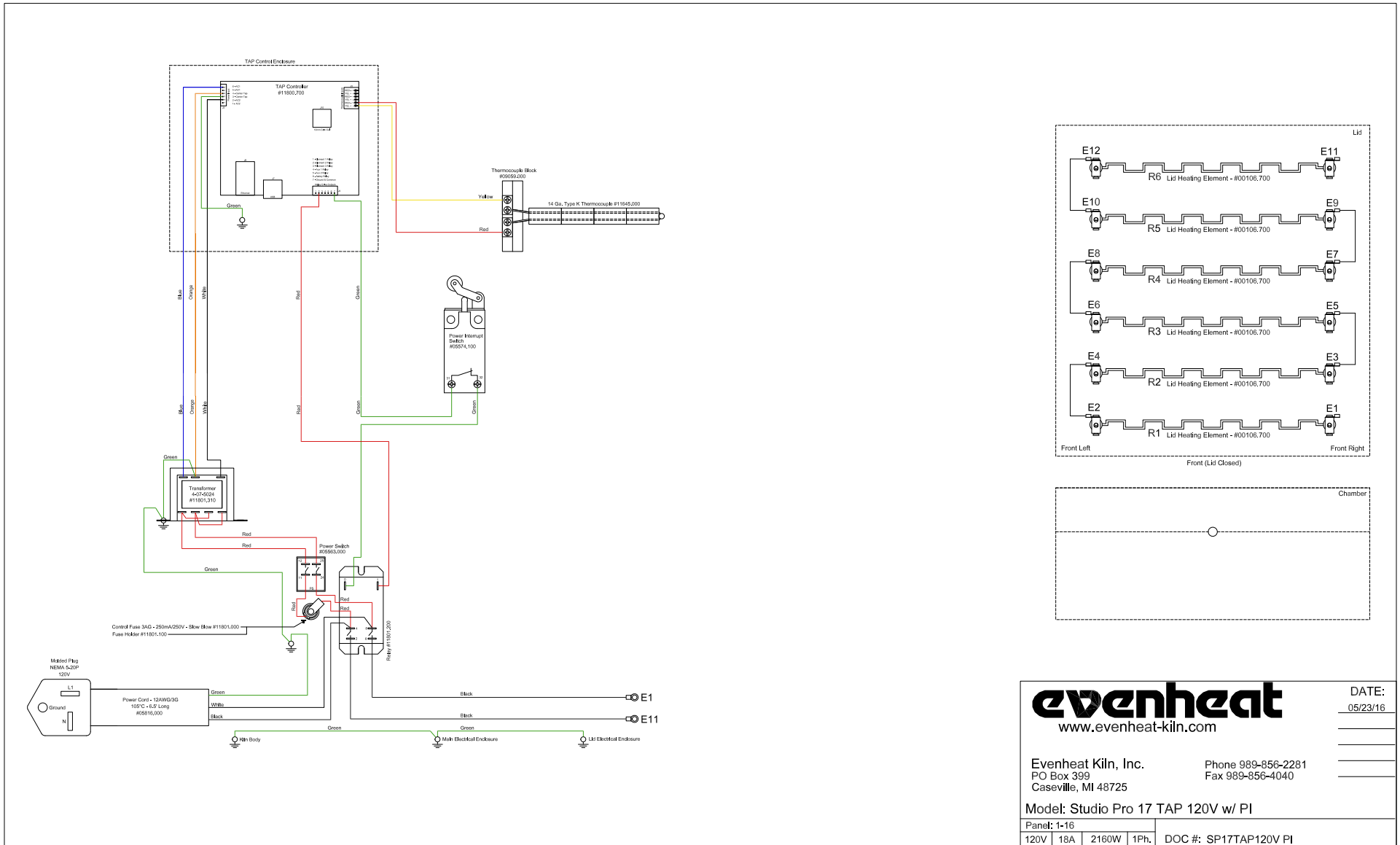
evenheat
 www.evenheat-kiln.com

DATE: 05/23/16

Evenheat Kiln, Inc. Phone 989-856-2281
 PO Box 399 Fax 989-856-4040
 Caseville, MI 48725

Model: Studio Pro 17 RM3 SS 120V w/ PI

Panel: 1-16	
120V	18A 2160W 1Ph. DOC #: SP17RM3SS120V PI



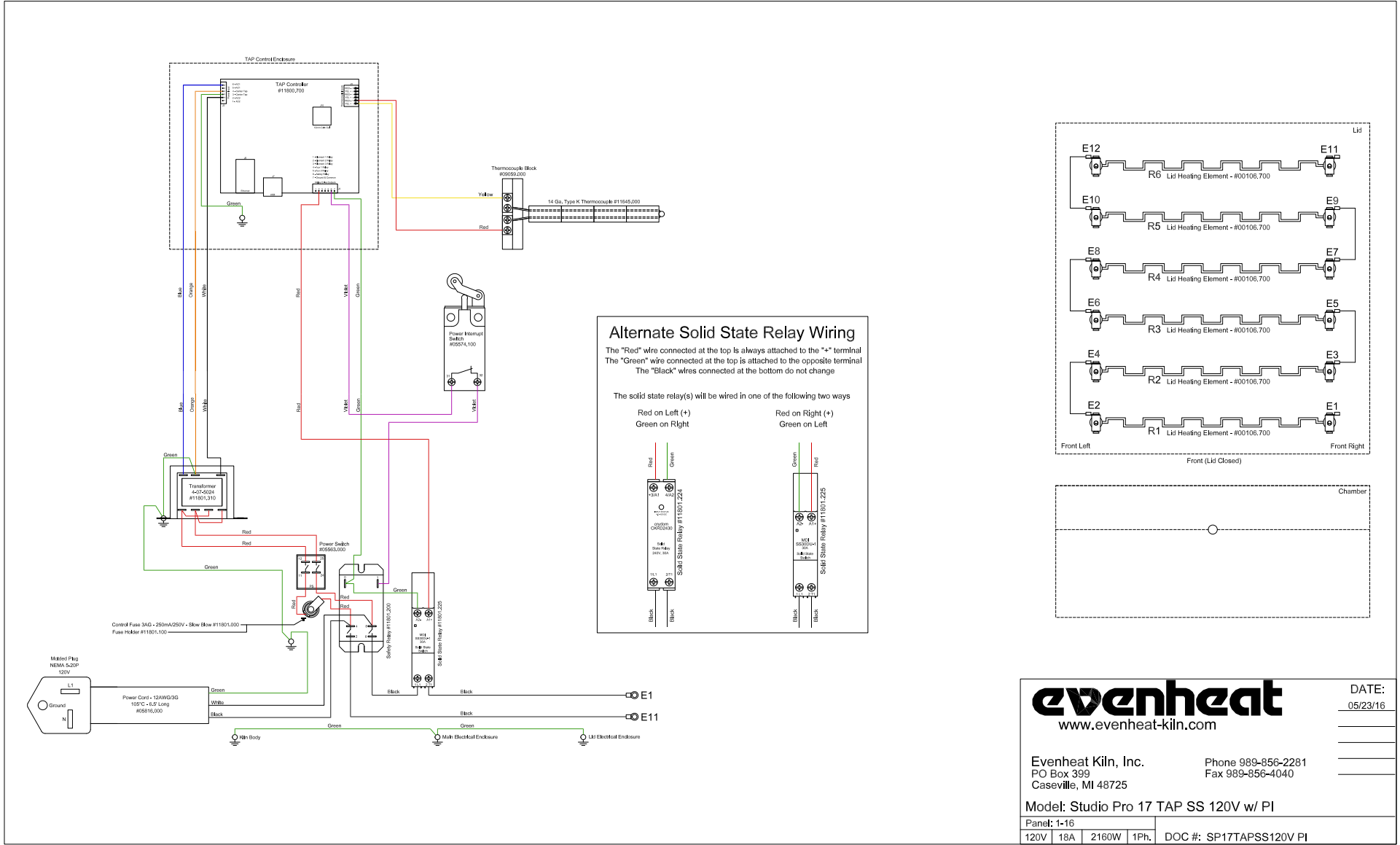
evenheat
www.evenheat-kiln.com

DATE: 05/23/16

Evenheat Kiln, Inc. Phone 989-856-2281
PO Box 399 Fax 989-856-4040
Caseville, MI 48725

Model: Studio Pro 17 TAP 120V w/ PI

Panel: 1-16					
120V	18A	2160W	1Ph.	DOC #: SP17TAP120V PI	



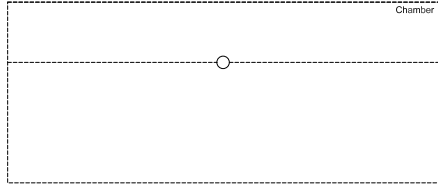
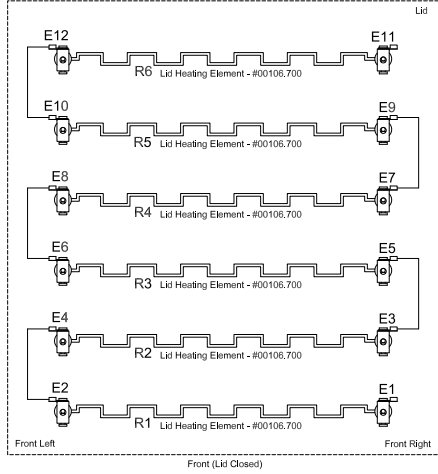
Alternate Solid State Relay Wiring

The "Red" wire connected at the top is always attached to the "+" terminal
 The "Green" wire connected at the top is attached to the opposite terminal
 The "Black" wires connected at the bottom do not change

The solid state relay(s) will be wired in one of the following two ways

Red on Left (+)
Green on Right

Red on Right (+)
Green on Left



evenheat
 www.evenheat-kiln.com

DATE: 05/23/16

Evenheat Kiln, Inc. Phone 989-856-2281
 PO Box 399 Fax 989-856-4040
 Caseville, MI 48725

Model: Studio Pro 17 TAP SS 120V w/ PI

Panel: 1-16	120V	18A	2160W	1Ph.	DOC #: SP17TAPSS120V PI
-------------	------	-----	-------	------	-------------------------