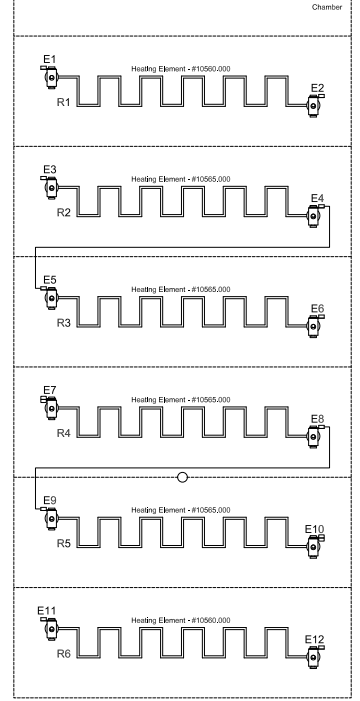


- #5 Ground - Green 9' - 10AWG THHN
 - #1 Line 1 - Black 9' - 10AWG THHN
 - #2 Line 2 - Purple 9' - 10AWG THHN
 - #3 Line 3 - Red 9' - 10AWG THHN
 - #4 Line 4 - Orange 9' - 10AWG THHN
- Control 3/4" Flex 7' Long



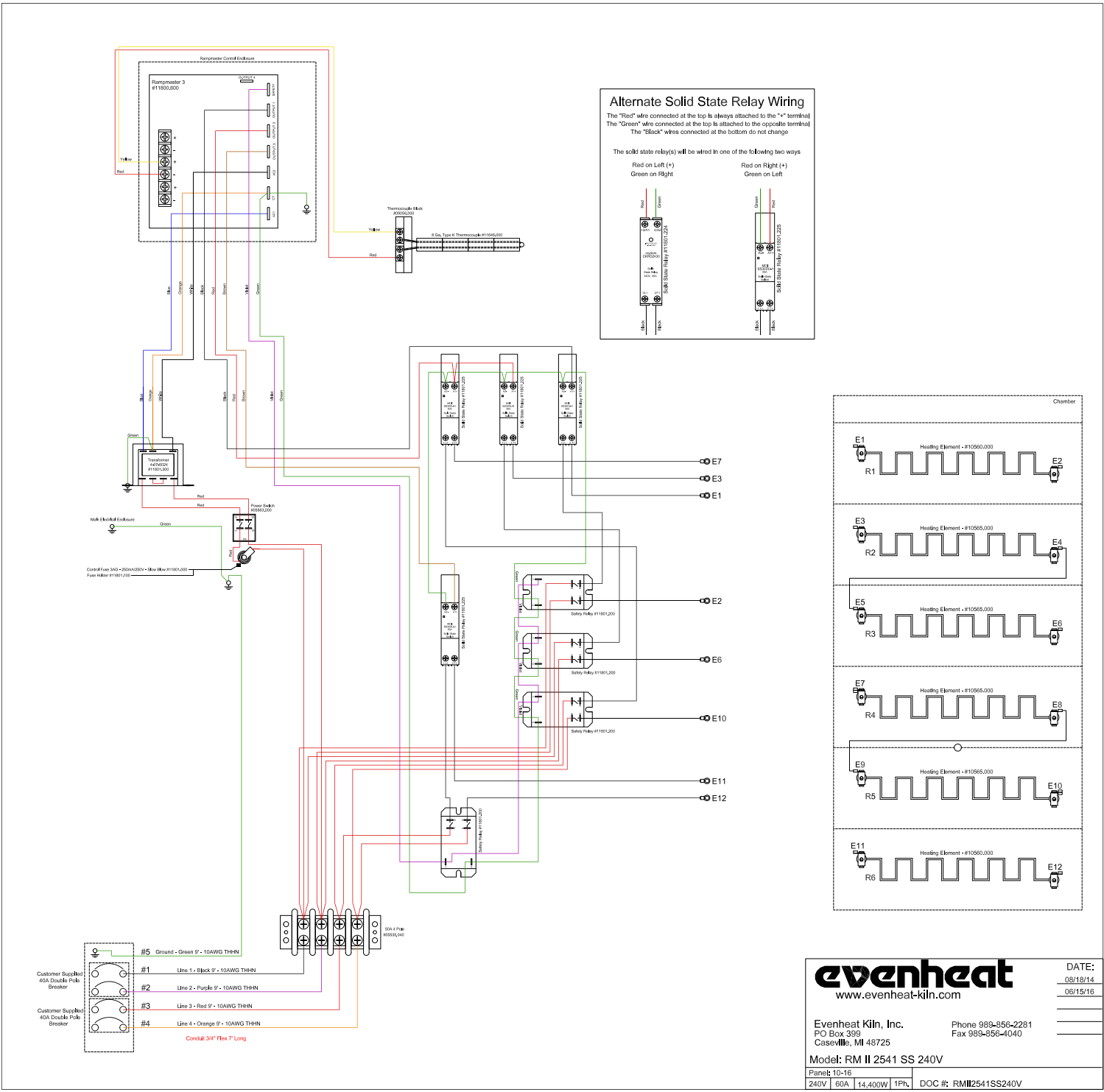
evenheat
www.evenheat-kin.com

DATE: 08/18/14
08/15/16

Evenheat Kiln, Inc. Phone 989-856-2281
PO Box 399 Fax 989-856-4040
Caseville, MI 48725

Model: RM II 2541 240V

Panel: 10-16	240V	60A	14,400W	1PH	DOC #: RMI2541240V
--------------	------	-----	---------	-----	--------------------

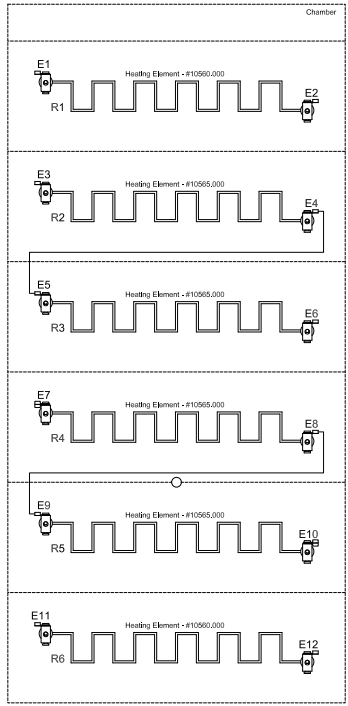


Alternate Solid State Relay Wiring
 The "Red" wire connected at the top is always attached to the "+" terminal
 The "Green" wire connected at the top is always attached to the opposite terminal
 The "Black" wires connected at the bottom do not change

The solid state relay(s) will be wired in one of the following two ways

Red on Left (+) Green on Right

Red on Right (+) Green on Left



- #5 Ground - Green 9' - 10AWG THHN
 - #1 Line 1 - Black 9' - 10AWG THHN
 - #2 Line 2 - Purple 9' - 10AWG THHN
 - #3 Line 3 - Red 9' - 10AWG THHN
 - #4 Line 4 - Orange 9' - 10AWG THHN
- Conduit 34F Flex 7' Long

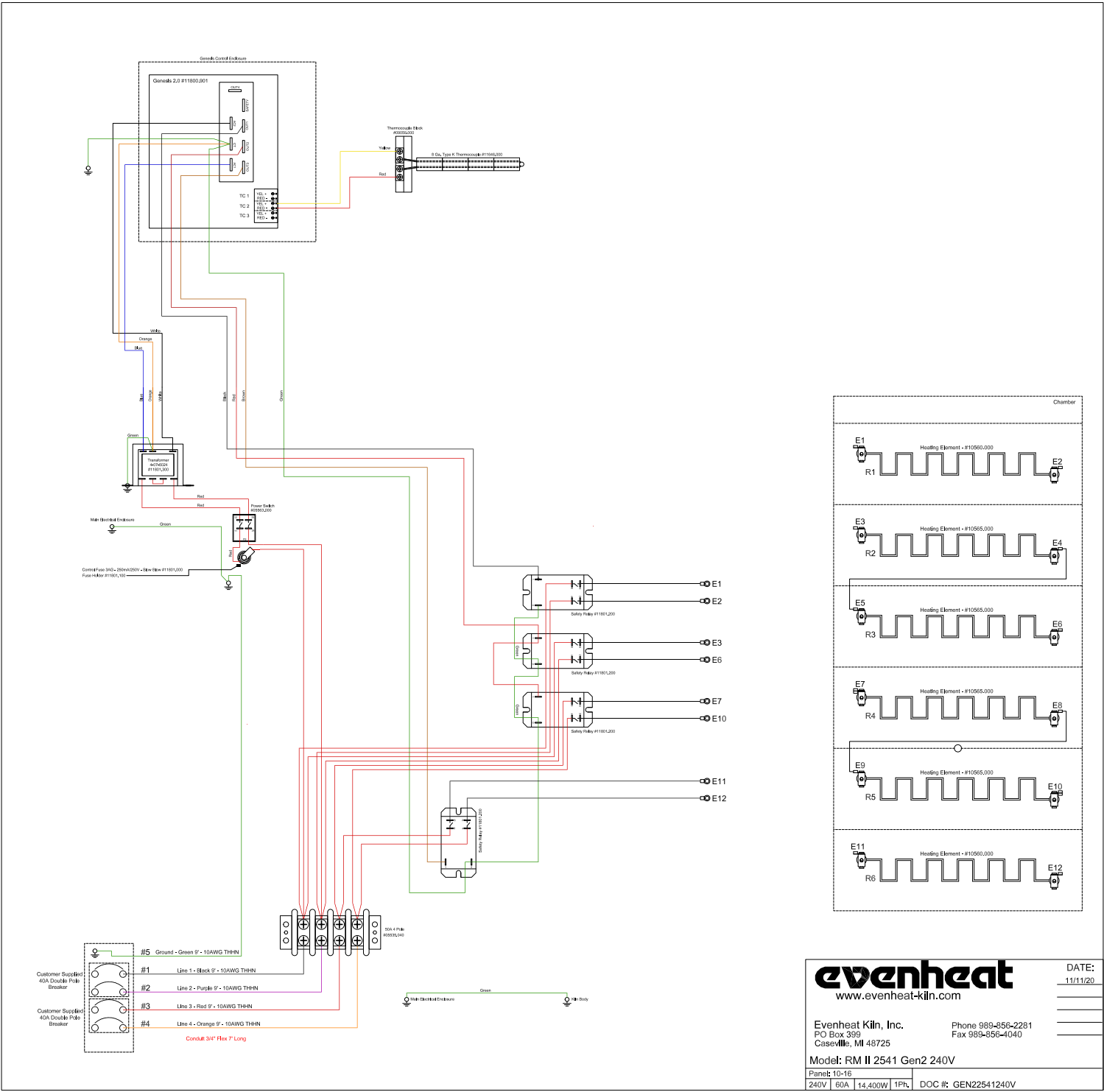
evenheat
 www.evenheat-kin.com

DATE: 08/18/14
 08/15/16

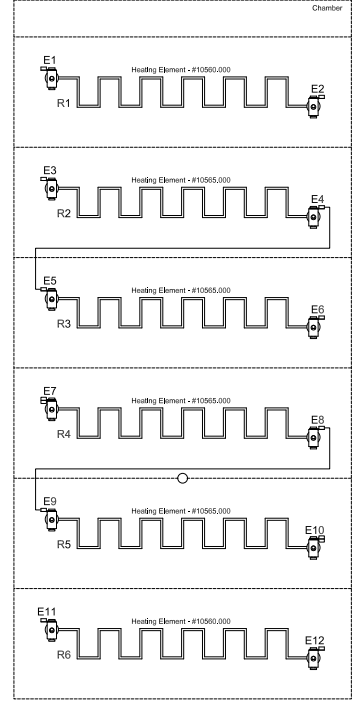
Evenheat Kin, Inc. Phone 989-856-2281
 PO Box 399 Fax 989-856-4040
 Caseville, MI 48725

Model: RM II 2541 SS 240V

Panel: 10-16	
240V 60A 14,400W 1PH	DOC #: RMI2541SS240V



- #5 Ground - Green 9' - 10AWG THHN
 - #1 Line 1 - Black 9' - 10AWG THHN
 - #2 Line 2 - Purple 9' - 10AWG THHN
 - #3 Line 3 - Red 9' - 10AWG THHN
 - #4 Line 4 - Orange 9' - 10AWG THHN
- Conduit: 3/4" Flex 7' Long



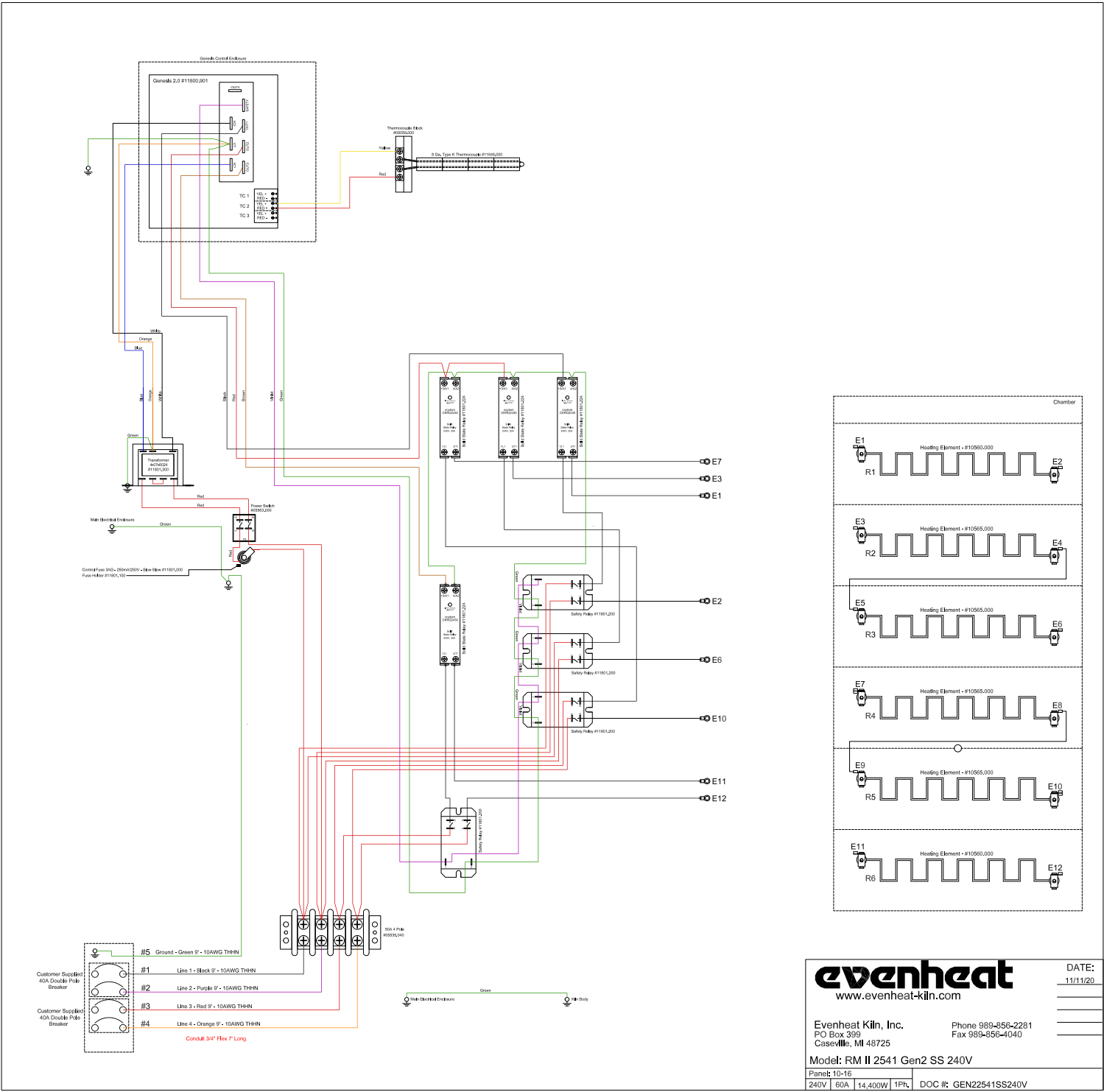
evenheat
www.evenheat-kiln.com

DATE: 11/11/20

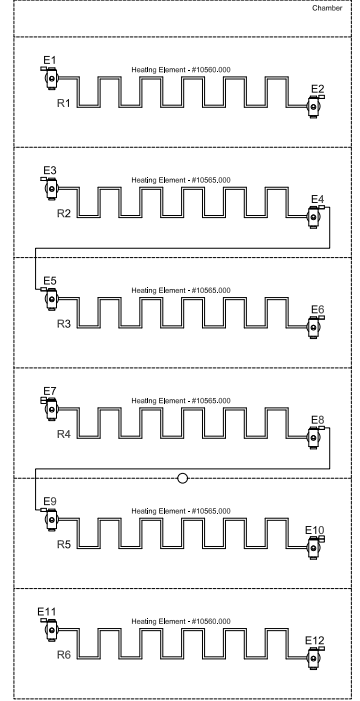
Evenheat Kiln, Inc. Phone 989-856-2281
PO Box 399 Fax 989-856-4040
Caseville, MI 48725

Model: RM II 2541 Gen2 240V

Panel: 10-16	240V	60A	14,400W	1PH	DOC #: GEN22541240V
--------------	------	-----	---------	-----	---------------------



- #5 Ground - Green 9' - 10AWG THHN
 - #1 Line 1 - Black 9' - 10AWG THHN
 - #2 Line 2 - Purple 9' - 10AWG THHN
 - #3 Line 3 - Red 9' - 10AWG THHN
 - #4 Line 4 - Orange 9' - 10AWG THHN
- Conduit 3/4" Flex 7' Long



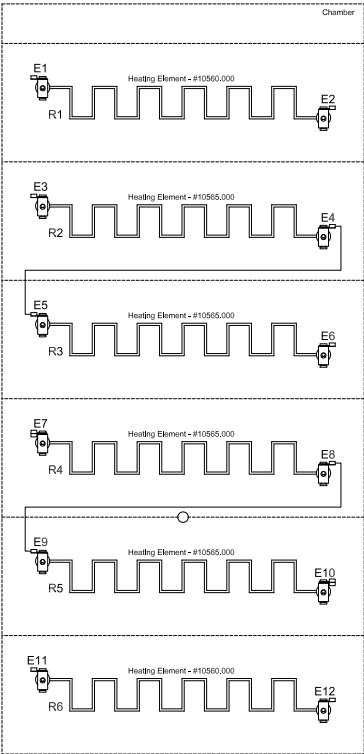
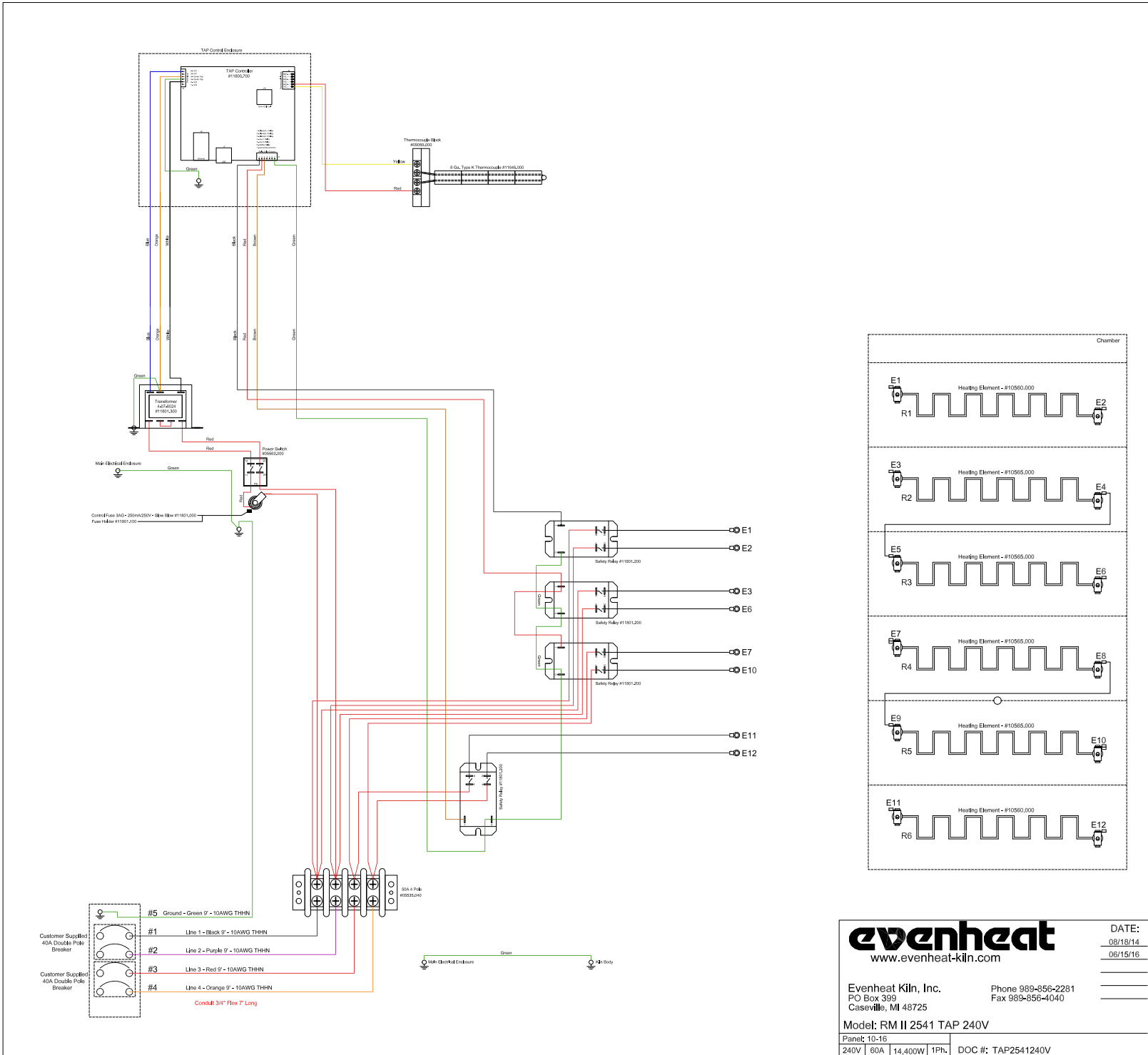
evenheat
www.evenheat-kiln.com

DATE: 11/11/20

Evenheat Kiln, Inc. Phone 989-856-2281
PO Box 399 Fax 989-856-4040
Caseville, MI 48725

Model: RM II 2541 Gen2 SS 240V

Panel: 10-16	
240V 60A 14,400W 1PH	DOC #: GEN22541SS240V



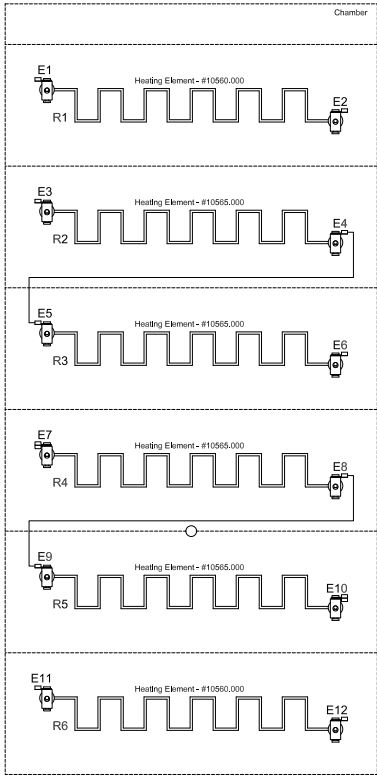
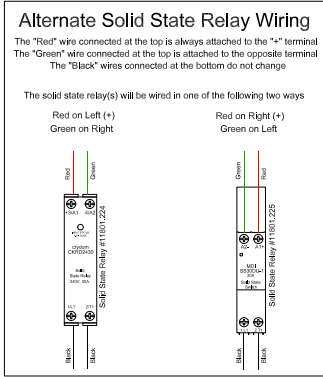
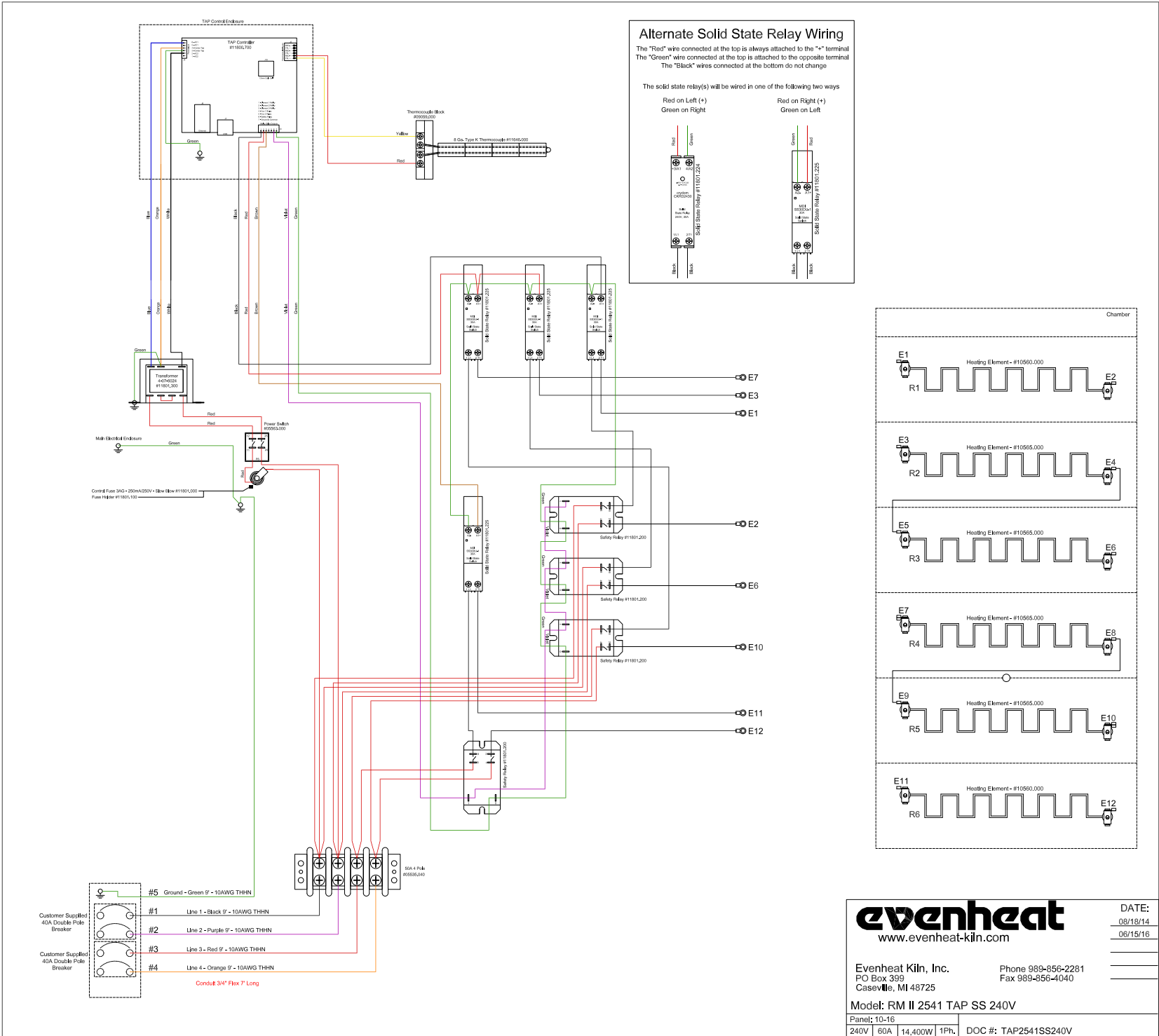
evenheat
www.evenheat-kiln.com

DATE:
08/18/14
06/15/16

Evenheat Kiln, Inc. Phone 989-856-2281
PO Box 399 Caseville, MI 48725 Fax 989-856-4040

Model: RM II 2541 TAP 240V

Panel: 10-16	
240V	60A 14,400W 1Ph.
DOC #: TAP2541240V	



evenheat
 www.evenheat-kiln.com

DATE:
 08/18/14
 06/15/16

Evenheat Kiln, Inc. Phone 989-856-2281
 PO Box 359 Fax 989-856-4040
 Caseville, MI 48725

Model: RM II 2541 TAP SS 240V

Panel: 10-16	
240V 60A 14,400W 1Ph.	DOC #: TAP2541SS240V