

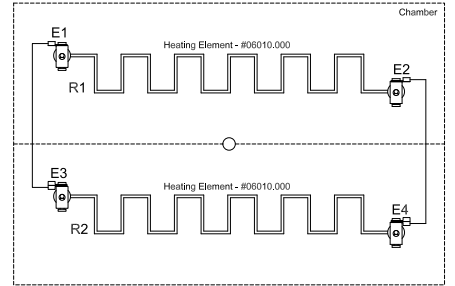
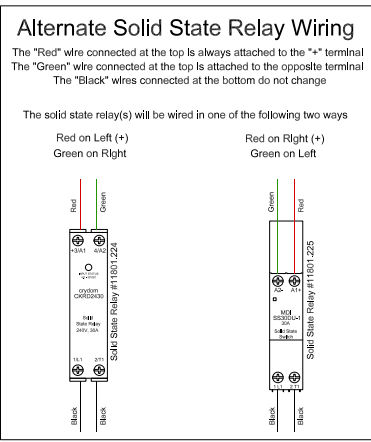
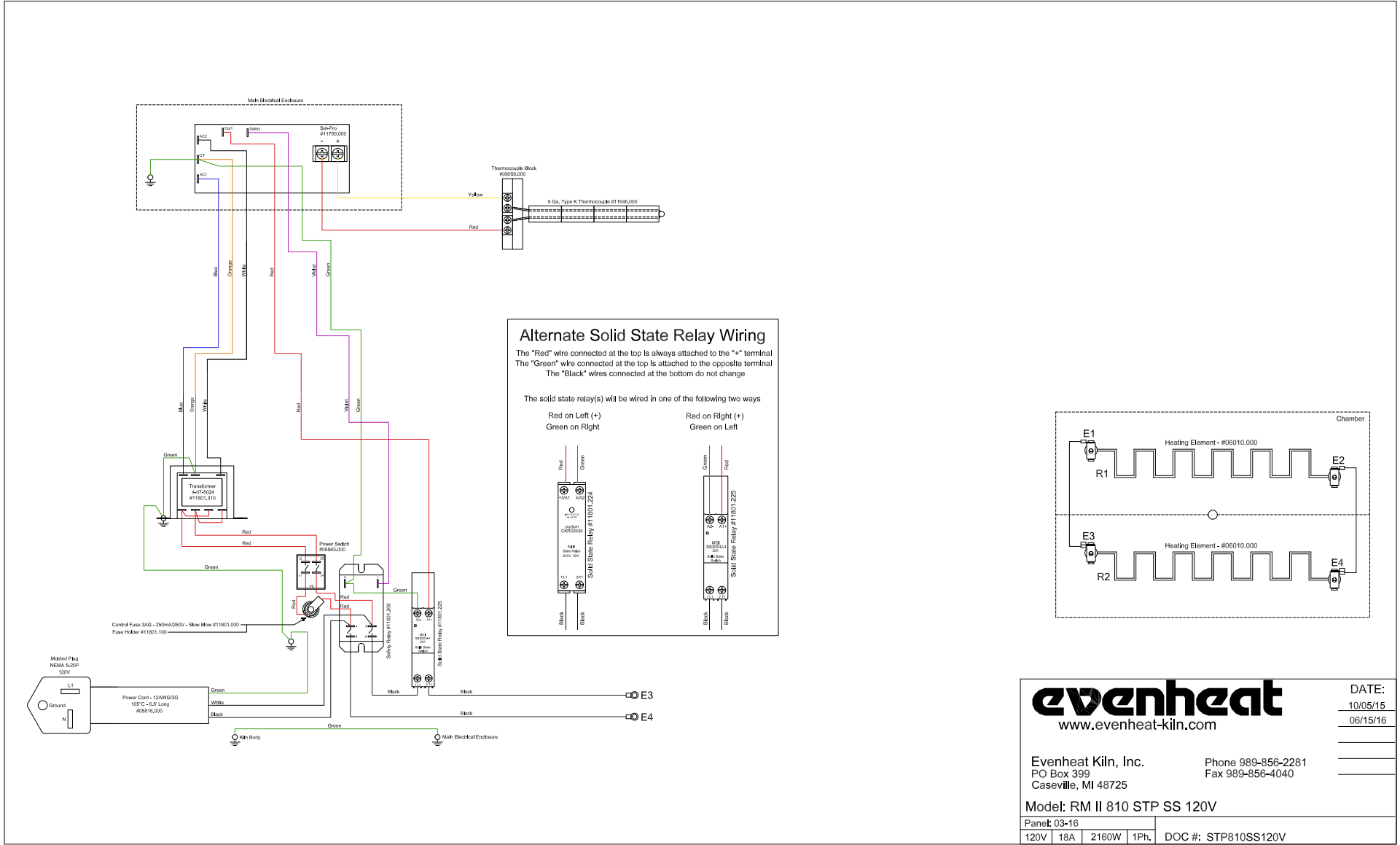
evenheat
www.evenheat-kiln.com

DATE:
10/05/15
06/15/16

Evenheat Kiln, Inc. Phone 989-856-2281
PO Box 399 Fax 989-856-4040
Caseville, MI 48725

Model: RM II 810 STP 120V

Panel: 03-16	
120V	18A 2160W 1Ph. DOC #: STP810120V





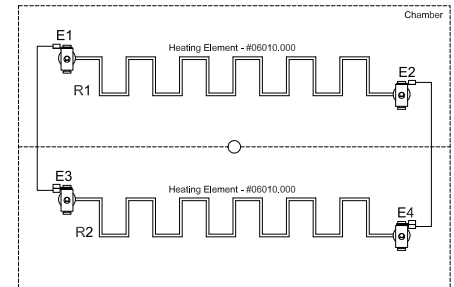
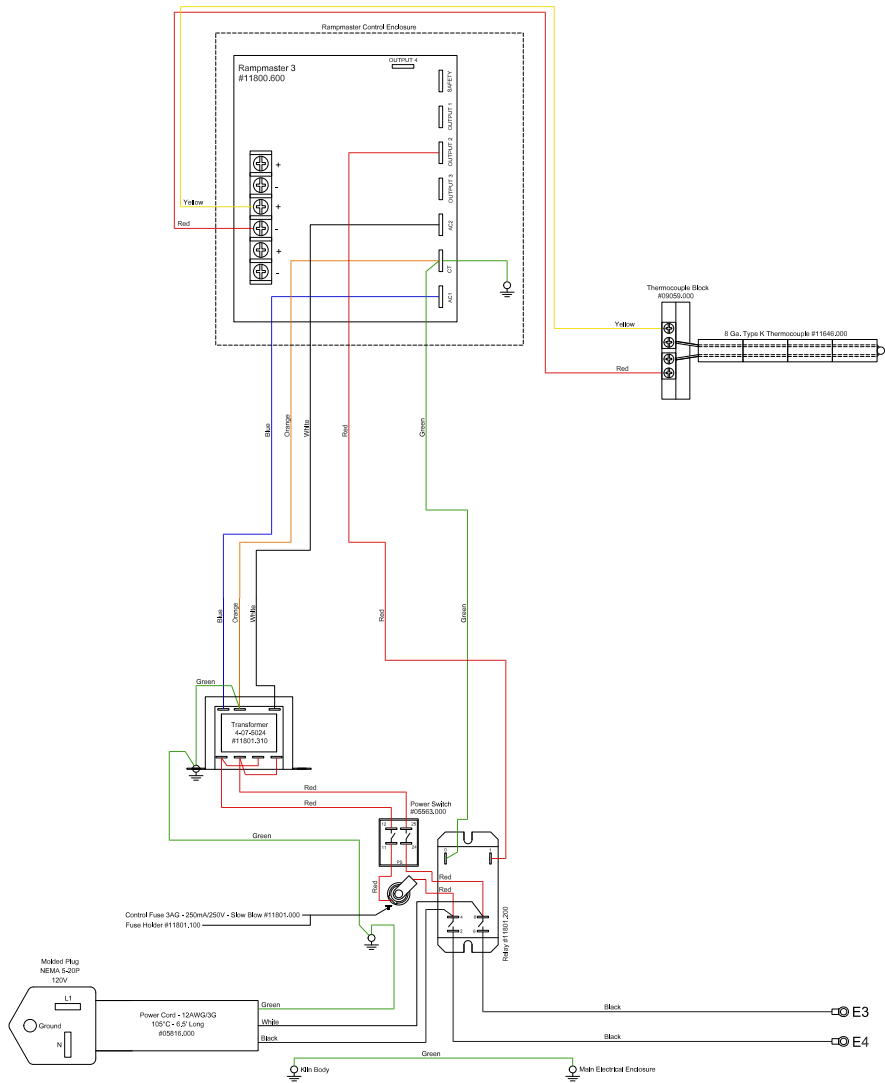
DATE:
10/05/15
06/15/16

www.evenheat-kiln.com

Evenheat Kiln, Inc. Phone 989-856-2281
 PO Box 399 Fax 989-856-4040
 Caseville, MI 48725

Model: RM II 810 STP SS 120V

Panel: 03-16	
120V	18A 2160W 1Ph. DOC #: STP810SS120V



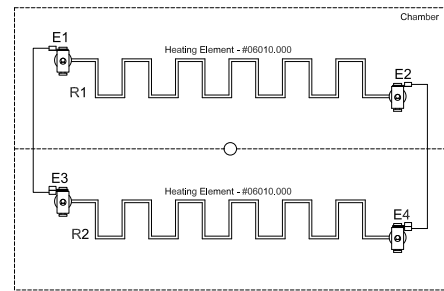
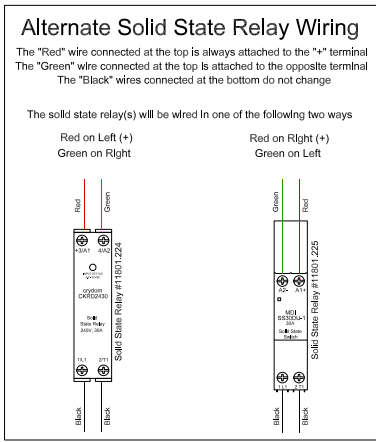
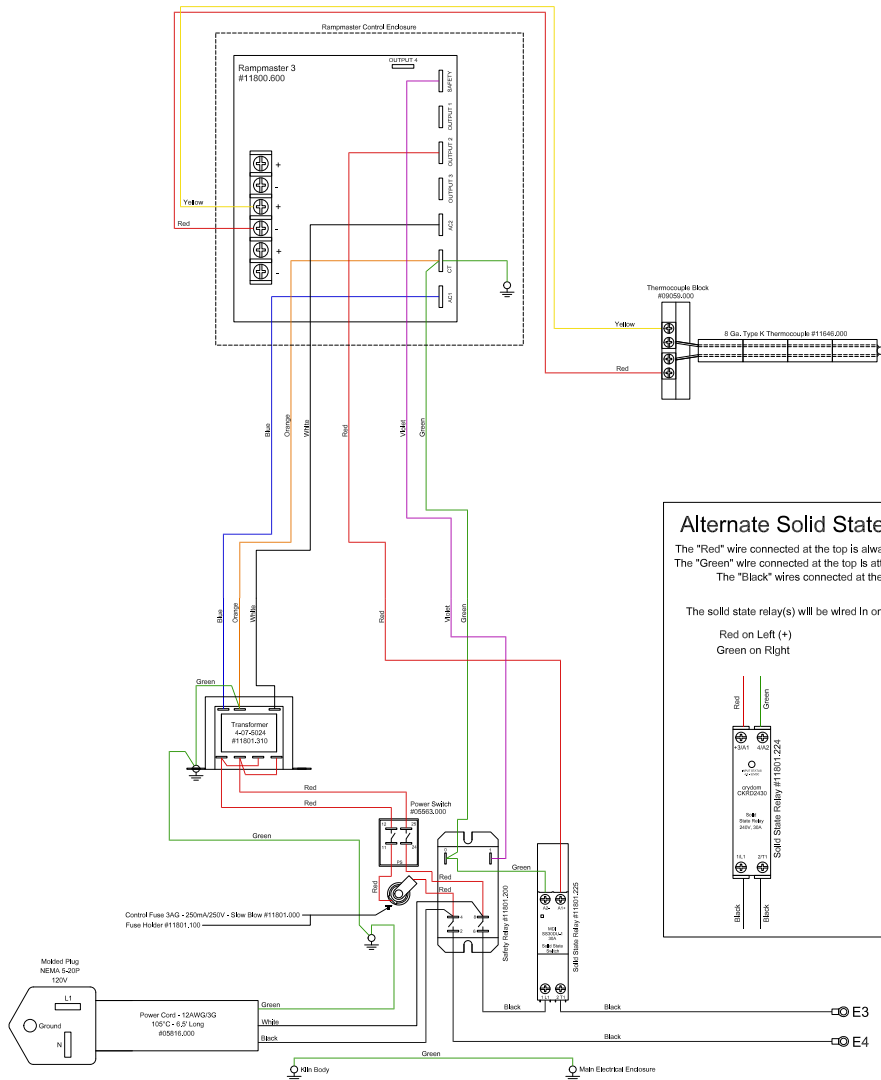
evenheat
www.evenheat-kiln.com

DATE:
10/05/15
06/15/16

Evenheat Kiln, Inc. Phone 989-856-2281
PO Box 399 Caseville, MI 48725 Fax 989-856-4040

Model: RM II 810 120V

Panel: 03-16	
120V	18A 2160W 1Ph. DOC #: RMI1810120V



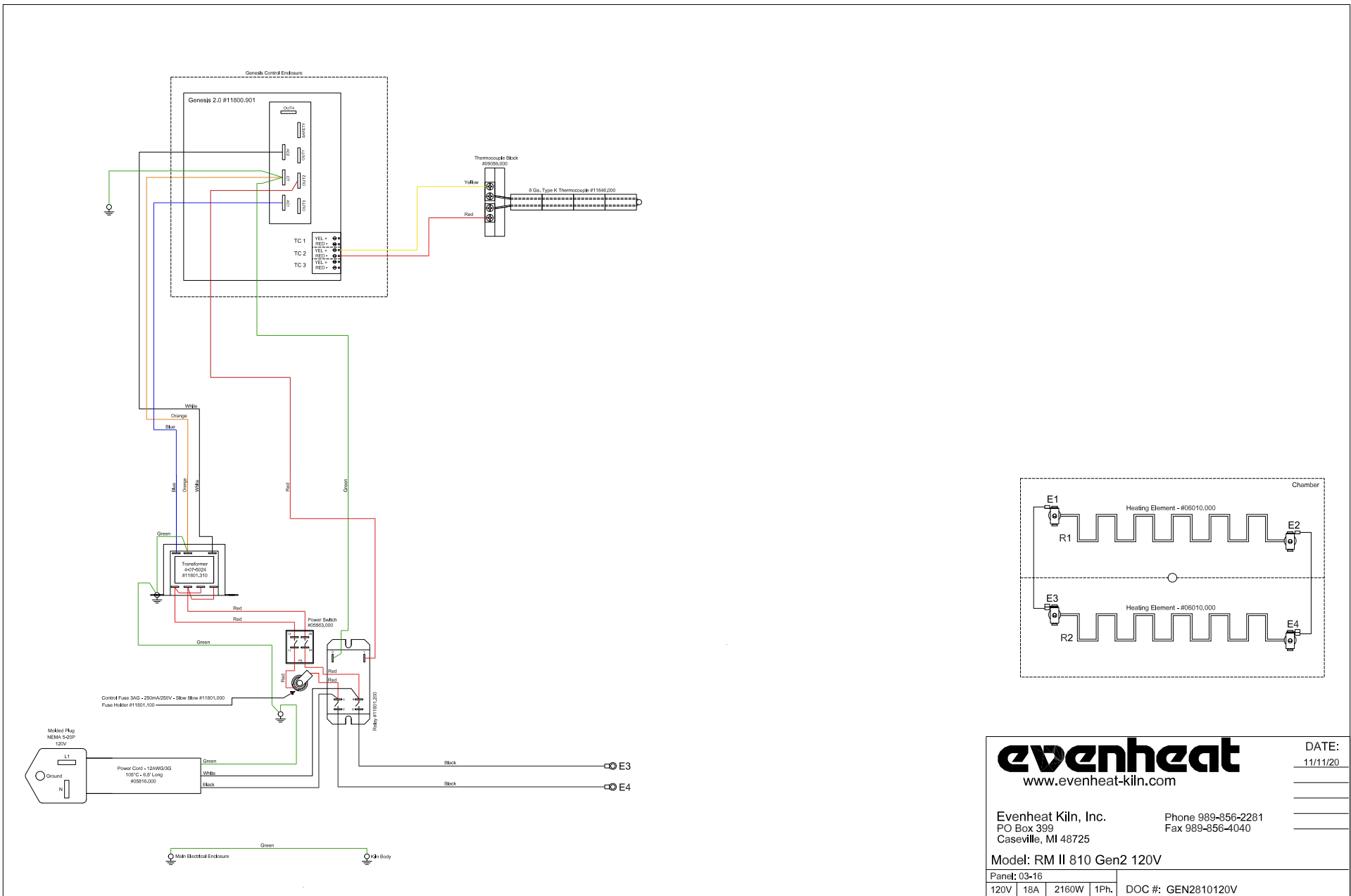
www.evenheat-kiln.com

DATE:
10/05/15
06/15/16

Evenheat Kiln, Inc. Phone 989-856-2281
 PO Box 399 Caseville, MI 48725 Fax 989-856-4040

Model: RM II 810 SS 120V

Panel: 03-16	
120V	18A 2160W 1Ph. DOC #: RMI1810SS120V



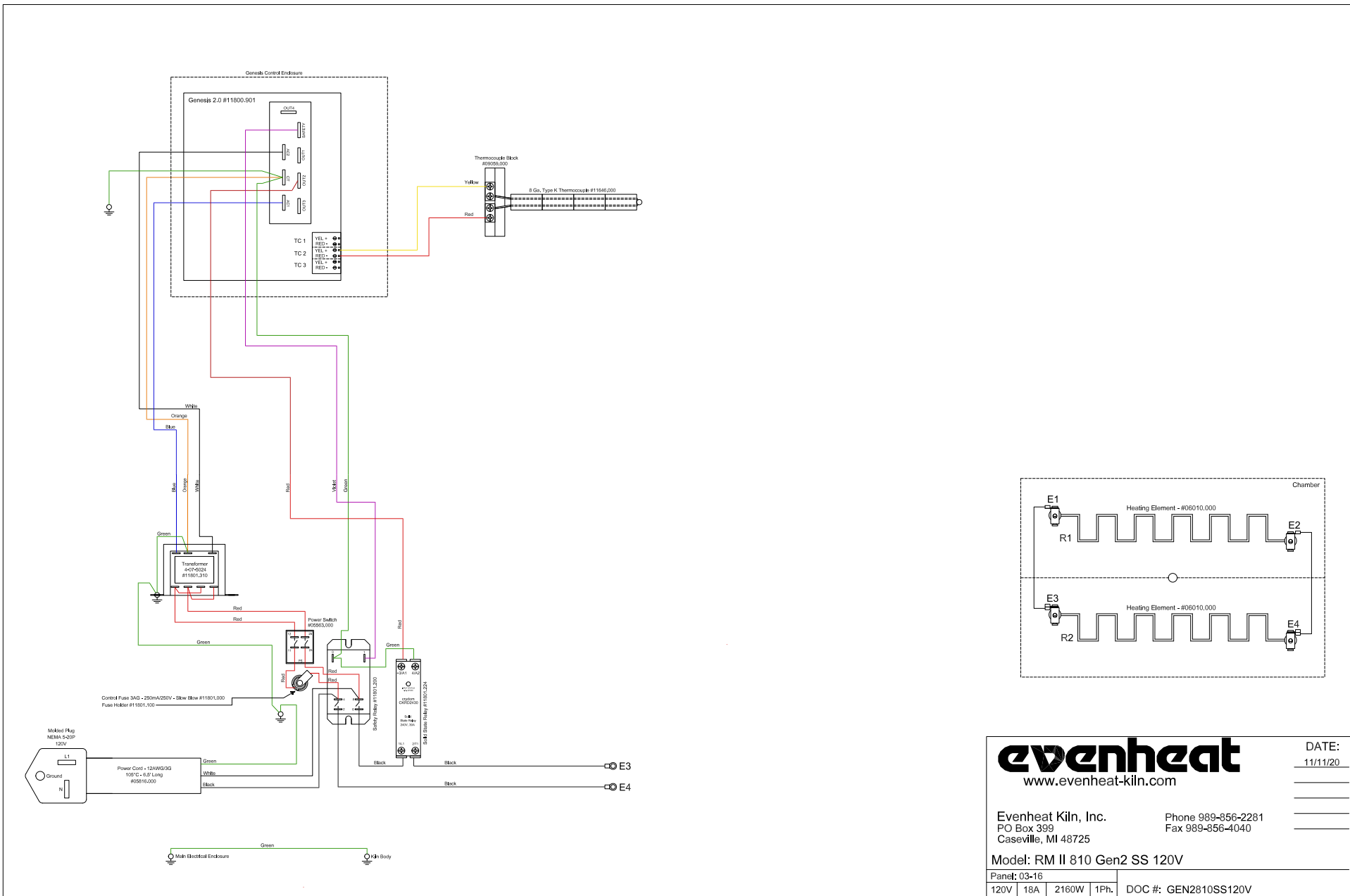
evenheat
www.evenheat-kiln.com

DATE:
11/11/20

Evenheat Kiln, Inc. Phone 989-856-2281
PO Box 399 Fax 989-856-4040
Caseville, MI 48725

Model: RM II 810 Gen2 120V

Panel: 03-16	
120V	18A 2160W 1Ph. DOC #: GEN2810120V



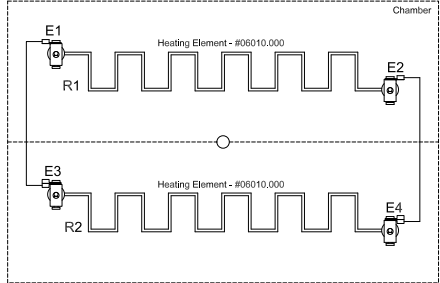
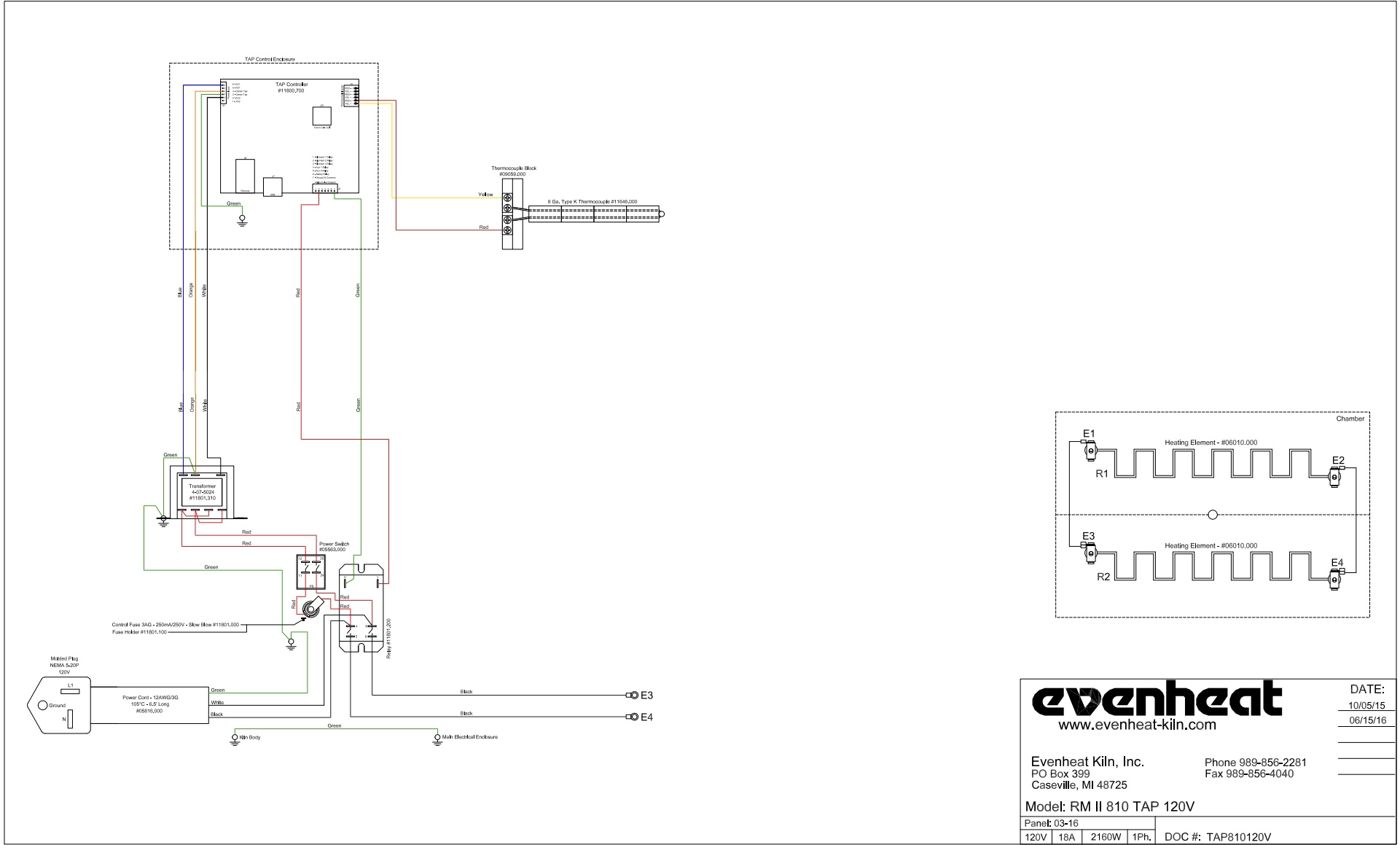
evenheat
www.evenheat-kiln.com

DATE: 11/11/20

Evenheat Kiln, Inc. Phone 989-856-2281
PO Box 399 Fax 989-856-4040
Caseville, MI 48725

Model: RM II 810 Gen2 SS 120V

Panel: 03-16	
120V	18A 2160W 1Ph. DOC #: GEN2810SS120V



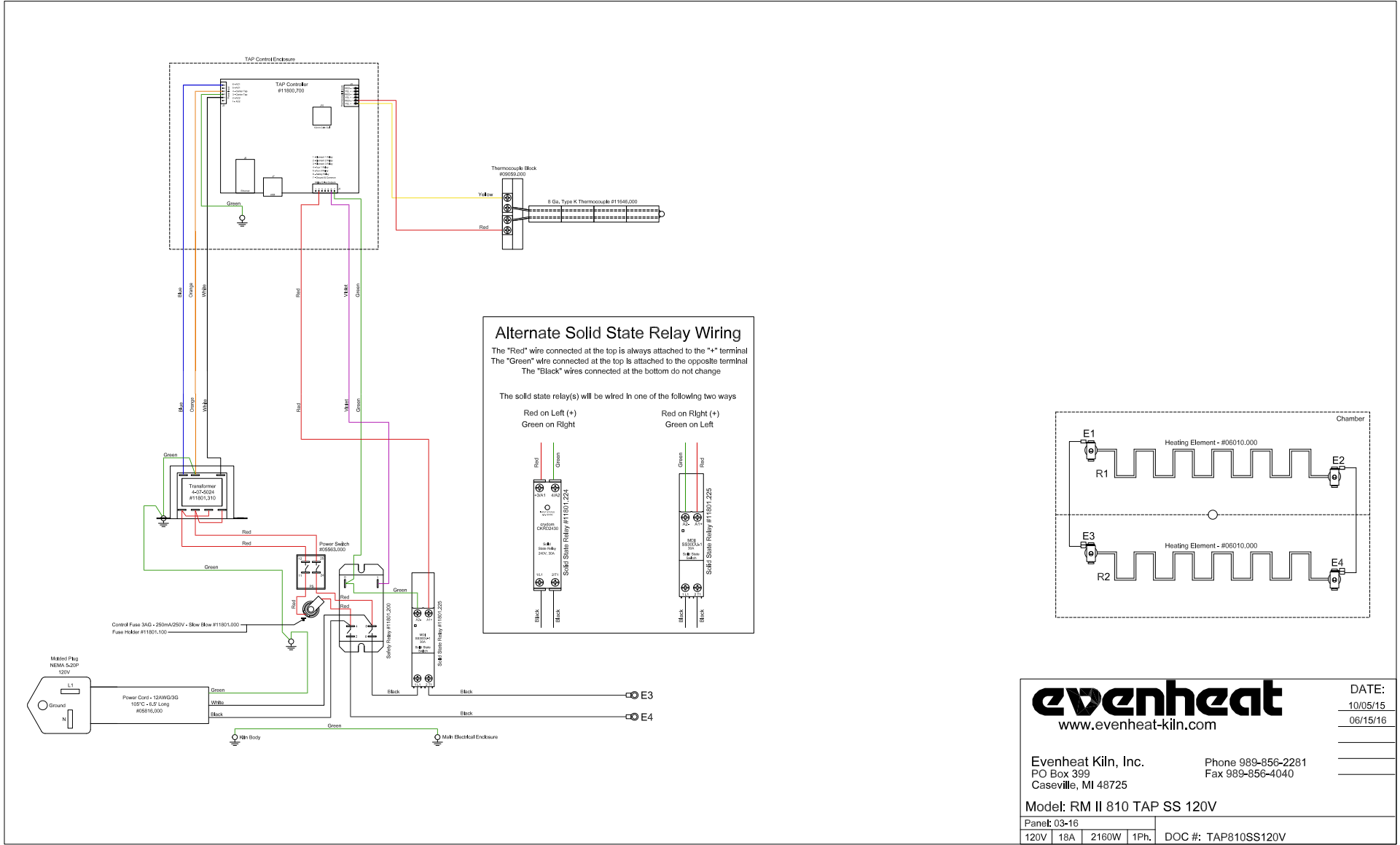
evenheat
www.evenheat-kiln.com

DATE:
10/05/15
06/15/16

Evenheat Kiln, Inc. Phone 989-856-2281
PO Box 399 Fax 989-856-4040
Caseville, MI 48725

Model: RM II 810 TAP 120V

Panel: 03-16	
120V	18A 2160W 1Ph. DOC #: TAP810120V



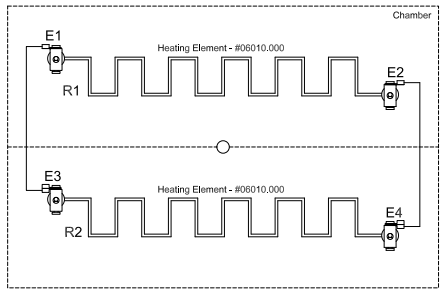
Alternate Solid State Relay Wiring

The "Red" wire connected at the top is always attached to the "-" terminal
 The "Green" wire connected at the top is attached to the opposite terminal
 The "Black" wires connected at the bottom do not change

The solid state relay(s) will be wired in one of the following two ways

Red on Left (+)
Green on Right

Red on Right (+)
Green on Left





DATE:
10/05/15
06/15/16

www.evenheat-kiln.com

Evenheat Kiln, Inc. Phone 989-856-2281
 PO Box 399 Fax 989-856-4040
 Caseville, MI 48725

Model: RM II 810 TAP SS 120V

Panel: 03-16			
120V	18A	2160W	1Ph.
		DOC #: TAP810SS120V	